

SM Transparency Report™ Program

An innovative and user-friendly PCR/LCA/EPD program – *plus much more*

Designed to standardize, harmonize and make product transparency reporting understandable and meaningful

1. Provides a time and cost-effective way to deliver PCRs for product groups

- The standardized 2-part PCR framework creates PCRs defined by functional performance, not materials

2. Delivers SM Transparency Reports™ – to drive greener purchase decisions

- A strategic marketing and sales tool, they making LCA & environmental performance information understandable & meaningful; enables a manufacturer to describe how they are making products greener. Manufacturers can showcase both the functional and environmental performance of products in a concise, easy to understand format for decision-makers to quickly review to make well-informed greener purchase decisions.

3. Helps you market greener, and then start designing greener

- More than just a report, you get SM Eco-concept & LCA Software with your data in a private dataset

A single manufacturer, group of manufacturers or trade associations can get started on PCRs when:

You are in an industry

- Where no PCRs have been created yet
- With many product categories, requiring multiple PCRs

Your products are

- In categories not addressed in current PCRs
- Made from materials and components that have EPDs, but no PCR to cover the products you make

And now create a Transparency Report using any PCR!



TOTO. Eco Drake 1.28gpf CST146

Created with unique identity, the Eco Drake® High Efficiency toilet combines contemporary design with innovations to give you better connections, better plumbing and better quality. Eco Drake® continues to set the standard for performance and beyond your expectations.

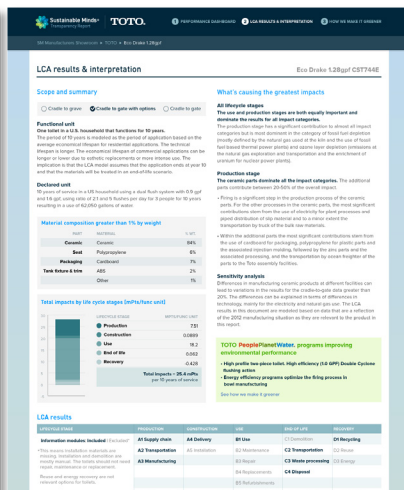
Performance Dashboard

Functional performance
Water use per flush: 1.28 gallons (4.9 L)
Water use per gallon: 0.28 gallons (1.06 L)
Water use per flush: 1.28 gallons (4.9 L)
Water use per gallon: 0.28 gallons (1.06 L)

Environmental performance
50% of all plastic from responsible sources
50% of all steel from responsible sources
50% of all copper from responsible sources
50% of all aluminum from responsible sources
50% of all glass from responsible sources
50% of all paper from responsible sources
50% of all cardboard from responsible sources
50% of all wood from responsible sources
50% of all leather from responsible sources
50% of all wool from responsible sources
50% of all cotton from responsible sources
50% of all silk from responsible sources
50% of all fur from responsible sources
50% of all feathers from responsible sources
50% of all down from responsible sources
50% of all wool from responsible sources
50% of all cotton from responsible sources
50% of all silk from responsible sources
50% of all fur from responsible sources
50% of all feathers from responsible sources
50% of all down from responsible sources

SM Transparency Report™

Learn about SM Eco-concept & LCA Software with your data in a private dataset



LCA results & interpretation

Scope and summary

Created to give with system. Created to give with system. Created to give with system.

Functional unit
The unit is 1.28 gallons of water per flush for 10 years.

Disposal unit
The unit is 1.28 gallons of water per flush for 10 years.

Material composition greater than 1% by weight

Material	Percentage
Steel	45%
Aluminum	25%
Plastic	15%
Other	15%

Total impacts by life cycle stage (mPa/flush/flush)

Stage	Production	Use	End of life
Production	0.0001	0.0001	0.0001
Use	0.0001	0.0001	0.0001
End of life	0.0001	0.0001	0.0001

LCA results

Material	Percentage	Production	Use	End of life	Storage
Steel	45%	0.0001	0.0001	0.0001	0.0001
Aluminum	25%	0.0001	0.0001	0.0001	0.0001
Plastic	15%	0.0001	0.0001	0.0001	0.0001
Other	15%	0.0001	0.0001	0.0001	0.0001

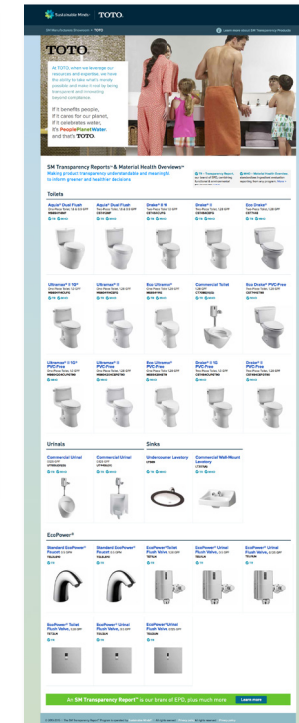


How we make it greener

50% of all steel from responsible sources

5.8M kWh = 12M kWh

100% of all cardboard used is 100% recycled content



Your Brand Showroom

Leverage your product transparency investments into sales growth

– Branded transparency info – all in one place

– Easily maintained & updated

– Distributed through the cloud, – free to all

– Ideal for sales, training & building a greener brand

Leverage your LCA investments to create credible and effective marketing tools, an EPD++

Consisting of 3 easy to understand pages, your product info & data is in the cloud – not encoded in PDFs.

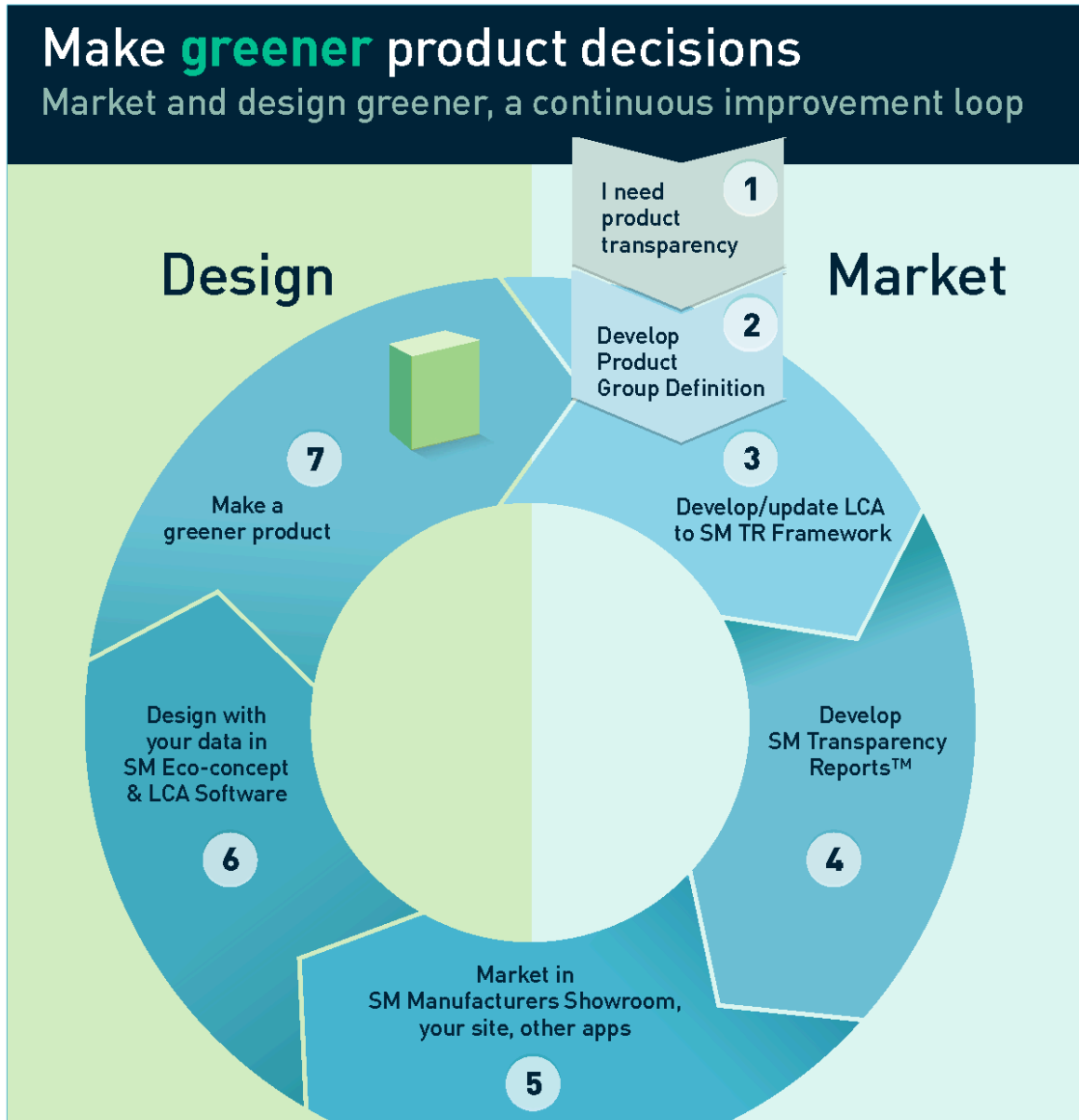
1. Performance dashboard
2. LCA results & interpretation
3. How we make it greener

They present functional and environmental performance information all in one place, make LCA results understandable and enable a manufacturer to describe how they are making products greener.

Third-party verified Transparency Reports meet green building rating system criteria in LEED v4 and Green Globes.

Getting started: SM Transparency Report Program

The first comprehensive program for manufacturers to design and market greener products



Deliverables include:

SM Transparency Products

- Strategic sales & marketing tools in an updatable HTML format in the cloud – your content not trapped in a PDF (a TR is an ISO 14025 Type III environmental declaration).
- Add a Material Health Overview for comprehensive view of what's in a product and why. The first EPD and material evaluation delivered in 1 cloud-based report.
- Your Brand Showroom, a public destination to showcase your products & leverage investments in product transparency
- Presence for 3 years, drive traffic to websites and social media
- Promotion to the SM community at launch

SM Software & Data

- SM Eco-concept & LCA Software account with 1 user subscription (*additional subscriptions purchased separately*)
- Your LCA data as SM impact factors in a Private Dataset
- Example product modeling to design greener

Design

- **Make better decisions earlier**
- **Make process more efficient**
- **Operationalize into development**
- **Manage supplier data, engage & reward**

Market

- **Get visibility for new greener products**
- **Make transparency reporting credible & efficient**
- **Standardize consistency & comparability**
- **Connect buyers & sellers**

Contact us about getting started & a quote.